

Why should I use a Construction Manager? (when I already have a staff of Engineers)

Article by Tim Bramsen, CCM

Throughout my involvement with CMAA Hawaii, I have had the opportunity to speak with some of Hawaii's owners regarding the benefit of utilizing Construction Managers (or Certified Construction Managers- CCMs) on their projects. At one of the first such meetings, I was asked, "Why should I use a Construction Manager on my projects when I already have a staff of engineers"? Although it seemed intuitively like such an obvious and valid question, I fumbled a bit on my answer that day, and since then I have spent a lot of time pondering the "right" answer to this question.

I would like to preface my statements by saying that there are many Engineers overseeing construction field operations who work hard and do a fine job, it is not my intent to demean their work in any way. The best CCMs I have ever worked with also had their PE's.

In its most simple form, a construction project can be broken down into 2 phases. The planning of the work and the execution of the work.

The planning of the work is chiefly the realm of the Engineer (or Architect). Without proper planning, there is no order, no specifications, no scope, no contract. While using a Construction Manager's skillset in the pre-design and design phases is important to the planning of the project- and will certainly help eliminate impacts of the constructability issues that may otherwise be overlooked, the majority of the planning, calculations, and development of the contract documents is done by the Engineer.

The execution of the contract in the field,

ensuring the project is built as well as possible, that construction of the project runs as smoothly as possible, and concludes with the fewest delays or claims possible is the role of the Construction Manager. The Construction Manager in the field is the liaison between the Owner, Engineer (Architect), and the Contractor. He/She is the keeper of the compass (scope) and the stop-watch (schedule) as the facility is constructed.

While formal education is an important aspect of being a CM, the most valuable skills that the CM brings to the table are communication skills and field experience.

Communication is one key. Although plansets and specifications seem somewhat bulletproof at the time the project is advertised, once construction starts, you will find that another reasonable interpretation exists- that of the contractor building the project. Black and white often become gray. Understanding these gray areas and navigating them to a conclusion that benefits the owner, while keeping the contractor whole- is what we as CMs do. One key to building the best project possible is to develop the common ground between the Owner and the Contractor. That is not to say that you take your eye off the contract require-

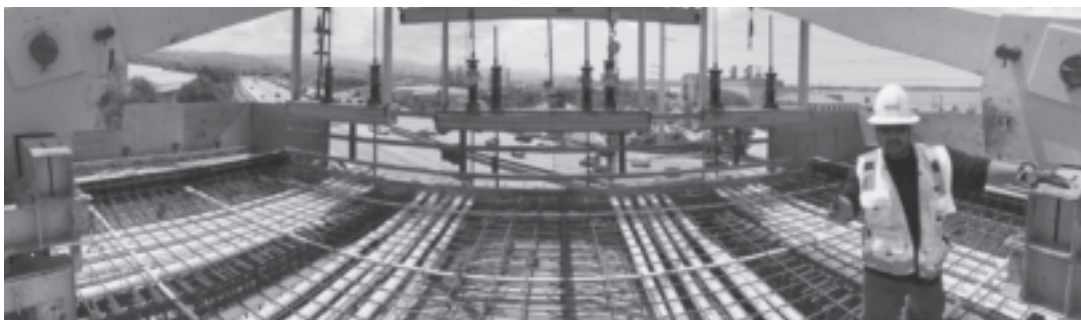


Constructing the rail guideway.

ments, it is actually the opposite of this. It means that you work with the contractor to ensure that, as they start the work, they have the same picture in their head of the finished product as the owner does. Then you manage that process and help them build it correctly the first time; as efficiently as possible. Doing this harnesses the synergy of the larger team and allows both sides to focus cooperatively against the issues that are inherent in the construction of any project. I have been on large and small projects where this has worked.

Field experience is the other key. The ability to look ahead and find/eliminate issues before they arise in the field is not something that you can learn through formal training. It results from years of experience obtained resolving similar situations and issues and either knowing how to avoid them ahead of time or how to effectively

handle them when they do happen. This experience is also very effective when negotiating changes to the contract, "arguing" plan and specification interpretations with the contractor, effectively discussing and explaining to non-field personnel issues encountered onsite, finding the "wiggle room" between (what may at times seem like) 2 immovable circumstances that will allow for-



CM Harris Okazaki on the Kamehameha Highway guideway.

continued on page 7



Published monthly by:

HAWAII COUNCIL OF ENGINEERING SOCIETIES

SERVICE PRINTERS, INC.

1829 Dillingham Boulevard • Honolulu, HI 96819

Telephone: (808) 841-7644 • Fax: (808) 847-1487

ADDRESS ARTICLES FOR PUBLICATION TO:

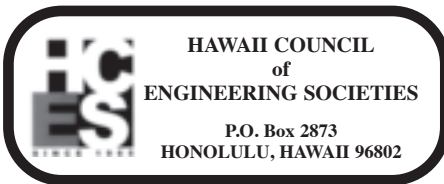
WARREN YAMAMOTO

1526-C Pukey Avenue • Honolulu, HI 96816

Telephone: 732-5216

WILIKI MAILING LIST

Additions and/or corrections to the Wiliki mailing list should indicate the proper society, institution or association. Corrections to email addresses should be submitted to your society coordinator.



HOME PAGE: hceshawaii.org
EMAIL: hcesorg@gmail.com

2016-2017 OFFICERS

Chair: Joanne Hiramatsu
Vice-Chair: Kristen Yoshida
Secretary:
Treasurer: Ken Kawahara

SOC Representative

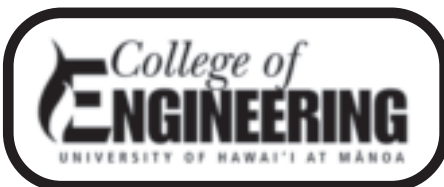
AACE C. Kanae
ACECH K. Kawahara
APWA J. Hiramatsu
ASCE B. Rasa
ASHRAE D. Kiahi
ASME D. Kam
CMAA T. Bramson
EAH M. Albright
FALEA F.T. Cruzata
HSPE M. Kamaka
IEEE G. Torigoe
ITE W. Yamamoto
SAME L. Wong
SEAOH R. Lawton
SFPE S. Dannaway
SWE K. Yoshida
UHM CoE S.K. Choi

Alternate

M. Uyehara

D. Sato

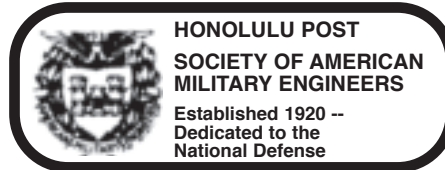
K. Kunimine



2540 Dole Street, Holmes Hall
Honolulu, Hawaii 96822

UHM College of Engineering Deans and Chairs

Interim Dean H. Ronald Riggs
Assistant Dean Song K. Choi
CEE Chair Panos Prevedouros
EE Chair Wayne Shiroma
ME Chair Mehrdad N. Ghasemi Nejjad
HCAC Director Magdy Iskander



P.O. Box 31218, Honolulu, HI 96817

Web page: www.samehonolulu.org

SAME Honolulu Officers and Directors

President Col Scott Warner, USAF
VP/Programs Bryan Zachmeier, USAF (Ret)
VP/Sustaining Members Will Boudra, F.SAME, USN (Ret)
Secretary Wesley Ishizu
Treasurer Capt Jonathan Polston, USAF
Regional VP, Pacific Region David Brothie, PE
Advisor at Lge, Air Force Richard Stump, AIA, F.SAME
Advisor at Lge, Army Col Mickey Addison, USAF
Advisor at Lge, Civilian MAJ Andrew Johannes, USA
Advisor at Lge, Coast Guard John Lohr, Col, USAF (Ret)
Advisor at Lge, Navy LCDR Todd Wimmer, USCG
LCDR Nathaniel Herron, USN

2017 SAME Honolulu Scholarship Program

Each year, SAME Honolulu offers several four-year and one-year scholarships to deserving high school seniors and college students who will be or are currently enrolled at a university with an accredited engineering or architecture program. For more information on the 2017 scholarship program categories, eligibility, and scholarship application submittal requirements, download the 2017 SAME Honolulu Scholarship Application at www.samehonolulu.org. **Application deadline is May 31, 2017(postmarked).**

Winners will be announced in late June / early July 2017. For inquiries, contact the Communications and Scholarship Director, Julie Chen at Scholarship@samehonolulu.org.

2017 SAME Honolulu Pacific Industry Forum and Scholarship May 9-10, 2017 | Ala Moana Hotel and Kaneohe Klipper Golf Course

The 2017 SAME Honolulu Post Pacific Industry Forum will once again be paired with a Scholarship Program Golf Tournament. The Pacific Industry Forum will be held on May 9 at the Ala Moana Hotel with the golf tournament held on the following day (May 10) at the scenic Kaneohe Klipper Golf Course on Marine Corps Base Hawaii (MCBH).

The forum and golf tournament proceeds will support SAME Honolulu Post's scholarship program, construction camps, and youth outreach programs for Hawaii students pursuing their education in engineering or architecture. Please save the date and encourage your co-workers, colleagues, and friends to come out and support the future engineers and architects of this country.

The 2017 Pacific Industry Forum will bring SAME sustaining and individual members, non-members, and senior leaders from the Federal, State and County Governments for program briefings, a luncheon, and small business networking opportunities.

The 2017 Scholarship Program Golf Tournament offers excellent networking opportunities while providing friendly competition among firms and Department of Defense/military members.

To register, visit SAME Honolulu website at www.samehonolulu.org.

For more information about the Pacific Industry Forum, email samehonolulu@gmail.com.

For more information about the Scholarship Program Golf Tournament, email matthew.stimpson@aecom.com.

SAME Honolulu April 12, 2017 Lunch Meeting Presentation

Topic: Flood Mitigation for Fort Shafter Flats, Planning, Design, and Construction

Synopsis: This presentation discussed the flood plain mapping revisions, planning for flood mitigation, and the design and construction of the flood mitigation project at Fort Shafter Flats. This project was undertaken to remove the upper Fort Shafter Flats from the 1% annual chance exceedance floodplain to protect military personal and property.

Presenter: Michael Wong, Chief of Civil Works Technical Branch, Engineering and Construction Division, U.S. Army Corps of Engineers

Michael Wong has served as the Chief of Civil Works Technical Branch since 2010. Prior to this appointment, Michael was the Technical Branch's Hydrologic and Hydraulic (H&H) team leader. The Civil Works Technical Branch is engaged in a wide range of services in the fields of flood control, hydrologic and floodplain analysis, economics, environmental restoration, coastal erosion, commercial navigation, and operations and maintenance.

Michael obtained his B.S. in Civil Engineering in 1989 and M.S. in Civil Engineering in 1991 from the University of Hawaii at Manoa. He began working in the U.S. Army Corps of Engineers (USACE), Honolulu District in June 2004 as a Hydraulic Engineer. He has worked on many H&H projects covering flood risk reduction, flood hazard analysis, storm drainage analysis, levee performance, and dam break analysis. Project work has included design, project formulation, and project management.

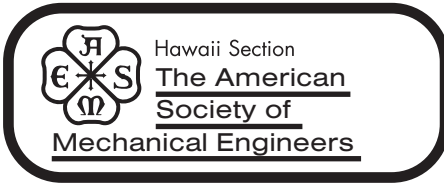


Po Box 12204 Honolulu, HI 96828
www.uhalumni.org/eaauh

2016-2017 Officers

President Neal Miyake
Vice Pres Anthony Paresa
Treasurer Dennis Toba
Secretary Rodney Chong
Immediate Past Pres Keith Uemura
Past Pres Dayna Nemoto
Directors Stephen Cayetano
Ken Hayashida
John Katahira
Ken Kawahara
Diane Kodama
Stancher Mabellos
Mike Magaoay
Derek Mukai
Martin Nakasone
Ross Okuda
Landon Sakai
Wayne Shiroma
Jonathan Suzuki
Edward Yoshimura
Kyle Yukumoto
Michele Shimoda

Student Dir



www.asme-hi.com

ASME-HI 2015-2016 Officers

Chairperson	Derek Sato	543-4108
	Derek.sato@hawaiianelectric.com	
Vice-Chair	Derick Kam	
	derickFPE@gmail.com	
Secretary	Victor Russell	
	dsaengr@aol.com	
Treasurer	Kevin Dang	737-1708
	dangk001@hawaii.rr.com	
Past-Chair	Kory Ikeda	
HCES Rep:	Derick Kam	
Alternate:	Derek Sato	

NEXT ASME-HAWAII SECTION GENERAL MEMBERSHIP MEETING

Date: June 6, 2017

Time: 5:30 pm to 7:00 pm

Place: HECO Ward Ave Cafeteria Conference Room

Agenda: To be announced. This will be the last meeting as Chairman for Derek Sato.

As usual, all members are invited and encouraged to attend our meetings. There are always lots of complimentary pizza and soft drinks. Please contact Chairman Derek Sato for directions and for more information, such as parking within Hawaiian Electric's Ward Avenue facilities.

HIGHLIGHTS OF MARCH 28 GENERAL MEMBERSHIP MEETING

Meeting was held at Hawaiian Electric's Ward Avenue cafeteria on March 28, 2017, and called to order by Chairman Derek Sato. The reports and discussions included the following:

Student Section Report by Ryan Roque:

- Newly elected President Ryan Roque announced the newly elected officers and committee chairpersons. The officers are President Ryan Roque, Vice President Karen Calaro, Treasurer Mykal Guigui, and Secretary Michelle Reed.
- Industry Guest Speaker from Pearl Harbor Shipyard attracted 80+ students. Presentation included careers at Pearl Harbor and how to apply for jobs there.
- The Student Section welcomes industry professional speakers on topics such as career fields, interview preparation and skills, the preferred candidate experiences, expectations of a young engineer, and other career/job search enhancement information and tips.

UHM DME Report by Dr. Zac Trimble:

- The official Mechanical Engineering registration count for the spring 2017 semester is 400+ students.
- Interviews for the new Dean of the College of Engineering are underway. Three current candidates have mechanical engineering backgrounds.
- Three ME Students attended the ASME E-fest West March 17-19, 2017 at the University of Nevada Las Vegas campus. The Human Powered Vehicle Challenge (HPVC) was held in conjunction with the E-fest event. CSU Northridge took overall 1st place.
- DME Industry Advisory Board meeting is planned for May 6, 2017.

Francis Rhodes Montgomery Design Competition: The competition will be on Friday, May 5, 2017 from 12 noon to 6 PM, on the UHM campus. The ME-482 student teams' abstract for judges are due by April 28, 2017. Dr. Zac Trimble will provide the judges the student project and presentation objectives. All

four judges are from Hawaiian Electric Company and have an ME background. There are 11 teams competing for four monetary prizes. ASME Hawaii Section voted to donate \$1,000 to the UHM DME in appreciation for this design competition.

Program for the Evening: Speaker Alexius Emejom of Hayward Gordon (Pumps and Mixers).

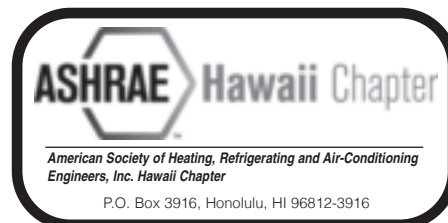
ASME-HAWAII P.E. REFRESHER COURSE

The 2017 Spring P.E. Refresher Course ended on April 19, 2017 with the Review and Questions session after 19 classes conducted by volunteers Dr. Charly Kinoshita, Dr. Stephen Masutani, Dr. Zac Trimble, and Raymond Liu, P.E. The Hawaii Section thanks these Mechanical Engineer instructors for their dedication and promotion of mechanical engineering. They donated many hours preparing for and conducting refreshers on Thermodynamics, Heat Transfer, Fluids, Machine Design, Mechanics, and HVAC.

For Raymond Liu, besides facilitating and instructing the HVAC, Engineering Economics, Electricity & Electrical Equipment chapters, he facilitated the mock exams, and organized and coordinated this entire P.E. Refresher Course. Thank you, Raymond Liu.

2017 ASME-HI BALLOT AND SURVEY

Our SurveyMonkey.com 2017 ballot and survey will end on April 30, 2017. Total respondents are holding at 24. Congratulations to are new officers, 2017-2018, who are Froilan Garma, Chairman; Derick Kam, Vice-Chair; Kevin Dang, Treasurer; Jason Frifeldt, Secretary; and Raymond Liu and Ronald Flegal, the Member (formerly Director) positions. There is a new position called the Group Page Administrator with Derek Sato, who will also be the Immediate Past-Chair. ASME Hawaii would like to thank Derek Sato for his many years of serving and keeping afloat the Hawaii Section. Although he is stepping down, we are very pleased that he plans to remain very active to help guide the new officers. Thank you, Derek Sato.



2016-2017 chapter officers and BOB

President:	Dean Borges P.E.
President Elect:	Kevin Luoma P.E.
Vice President:	Mofazzal Mir P.E.
Secretary:	Willie Diguc
Treasurer:	Samantha Niver P.E.



HAWAII CHAPTER OFFICERS

President: Robert Bigtas
S.S. Dannaway Associates
rbigtas@ssdafire.com
Vice President: Derick Kam
Fire Protection
Secretary: Ferdi Guinto
Lohaus and Associates
Treasurer: Sam Dannaway
Coffman Engineers



Website: hawaii.apwa.net

2017 Officers

President	Ryan Char	523-5866
	ryanc@g70.design	
Vice-Pres	Darin Izon	523-8499
	dizon@BrwnCald.com	
Secretary	Rouen Liu	543-7245
	rouen.liu@hawaiianelectric.com	
Past Pres	Victor Valdez	356-1281
	vvaldez@ssfm.com	

National Public Works Week

National Public Works Week is traditionally sponsored and observed during the third full week in May. During May 21-27, Hawaii Chapter will maintain an exhibit of various recent public works projects to energize and educate the public on the importance of the contribution of public works to their daily lives. The exhibit will also include proclamations from the Mayor and the Governor.

This year's theme "Public Works Connects Us" celebrates the vital role public works plays in connecting us all together. As the cornerstone of civilization, public works provides, maintains, and improves the structures and services that assure a higher quality of life for our communities. Its streets, roads, bridges, and public transportation keep us linked together from coast to coast, and its clean water and sanitation services keep us healthy and allow our communities to grow and prosper. APWA proudly salutes and thanks our public works professionals who work tirelessly every day to strengthen the bond that keeps us all connected. Additional information may be found at www.apwa.net.

Annual Education Fund Golf Tournament

The 24th Annual Education Fund Golf Tournament was held Friday, April 7, at the Ala Wai Golf Course. Golf Committee Chair Rouen Liu extends a big mahalo to all participants and volunteers for yet another successful event. Proceeds will sustain the Chapter's education fund which provides annual monetary awards at the State Science and Engineering Fair and annual partial scholarships towards higher education.

continued on page 7



The winning team (Team Ron N.S. Ho & Associates, Inc.) with President Ryan Char.



2016-2017 ASCE Hawaii Section Officers

President: Tim Goshi, P.E.
email: tgoshi@ascehawaii.com
 Pres.-Elect: Lara Karamatsu, P.E.
email: lkaramatsu@ascehawaii.org
 Vice Pres.: Eric Arakawa, P.E.
email: earakawa@ascehawaii.org
 Treasurer: Jason Kage, P.E.
email: jkage@ascehawaii.org
 Secretary: Dayna Nemoto-Shima, P.E.
email: dnemoto@ascehawaii.org
 Past Pres.: Ben Rasa, P.E.
email: brasa@ascehawaii.org
 YMF Pres.: Norman Leong, P.E.
email: nleong@ascehawaiiymf.org

MAY LUNCH MEETING (MAUI)

Our May meeting will be in Maui on Friday, May 12, 2017. Please visit www.ascehawaii.org for updates.

EXECUTIVE COMMITTEE MEETING

Last held: Wednesday, April 5, 2017
 Next meeting: May 3, 2017

INFRASTRUCTURE REPORT CARD

The 2017 Infrastructure Report Card has just been released on March 9th. Every 4 years, a group of civil engineers provide a comprehensive assessment of our nation's infrastructure across 16 categories. The overall infrastructure grade is a D+, unchanged since the 2013 report card. Three categories received a decline in grade, while seven saw slight improvements and six remain unchanged. Key solutions include investment, leadership & planning, and preparing for the future. ASCE estimates that the nation's infrastructure needs a total of \$2 trillion over the next 10 years, across all categories.

To read more about the grades and solutions, visit <http://www.infrastructurereportcard.org/>.

Hawaii is the only one in Region 8 that does not have a state report card. If you would like to help create one for Hawaii, please contact Tim Goshi, tgoshi@ascehawaii.org.

CONTINUING EDUCATION

ASCE National holds more than 275 seminars, courses and computer workshops each year on a wide variety of technical, management, and regulatory topics. These seminars are held in more than 45 cities across the U.S. In addition, ASCE offers customized on-site training and many distance learning programs, including live interactive web/teleconference seminars, online courses and courses on CD, videotape, and audiotape. Please visit <http://www.ascehawaii.org/links.html> and click on ASCE National for complete details.

ASCE HAWAII SECTION STUDENT SCHOLARSHIPS

Please help us increase our scholarship endowment so that we can recognize deserving students. We continue to accept tax-deductible donations with the goal of increasing the annual scholarships. Make your check payable to 'ASCE Hawaii Section' and mail to: ASCE Scholarship Committee, P.O. Box 917, Honolulu, HI 96808-0917. If you have any questions, please contact Glenn Miyasato at 488-7579, or gmiyasato@ascehawaii.org.

ASCE JOB LISTINGS

The following job listings are currently posted on the ASCE Hawaii Section website:

- Civil Engineer – AECOM
 - Assistant Program Administrator – City and County of Honolulu
 - Civil Engineer V (Geotechnical) – City and County of Honolulu
 - Civil Engineer V – City and County of Honolulu
 - Mechanical Engineer V – City and County of Honolulu
 - Design and Construction Branch Chief - City and County of Honolulu
 - Junior Engineer – GPRM Prestress
 - Civil Engineer – Group 70
 - Project Manager – Group 70
 - Senior Geotechnical/Geological Engineer – Hart Crowser
 - Project Geotechnical/Geological Engineer – Hart Crowser
 - Construction Project Engineer – Jas. W. Glover, Ltd.
 - Project Manager – Kennedy/Jenks Consultants
 - Staff Engineer (Honolulu Office) – Kennedy/Jenks Consultants
 - Staff Engineer (Hawaii Offices) – Kennedy/Jenks Consultants
 - Principal Project Control Engineer/Specialist, AIRPORT - Parsons
 - Civil Engineer V – SSFM International
 - Structural Engineer IV – SSFM International
- For further information on these job listings or to find out how you can post job openings in your company on this website, please visit <http://www.ascehawaii.org/job-listings.html>.



2016-2017 YMF Officers

Norman Leong, President
nleong@ascehawaiiymf.org
 Jordan Urabe, Vice President
jurabe@ascehawaiiymf.org
 Nicole Nakaoka, Secretary
nnakaoka@ascehawaiiymf.org
 Austin Wong, Treasurer
awong@ascehawaiiymf.org
 Amanda Tanaka, Past President
atanaka@ascehawaiiymf.org

YMF General Meeting

The next YMF general meeting is scheduled for Thursday, May 4, 2017 at 6:00 pm at Fort Shafter Bowling Alley. If you are interested in attending and learning more about the various professional, social and service opportunities available through YMF, please contact YMF at ymf.hawaii@gmail.com.



P.O. Box 88840
 Honolulu, HI 96830
 Website: www.acechawaii.org

2016-2017 Board of Directors

President - Corey Matsuoka, SSFM International
 President-Elect - Jeff Kalani, Yogi Kwong Engineers
 Treasurer - Sean Sugai, Ronald N.S. Ho & Associates
 Secretary - Ken Kawahara, Akinaka & Associates, Ltd.

LETTER FROM THE ACECH PRESIDENT

Written by Corey Matsuoka,
 P.E., PMP, LEED AP

Remember "I'm Just a Bill" by Schoolhouse Rock!? It's about how a bill becomes a law, and that was the extent of my legislative knowledge for a long time. Turns out, it's much more complicated than that. Who knows right? Well it turns out, ACECH does.

Lead by its Legislative Committee, ACECH remains active at the Capitol, protecting public interest relative to the built environment, and enhancing the business interest of the engineering profession. Committee members spend hundreds of hours a year, going through potential legislation, meeting with legislators, providing testimony and even testifying in person. It's a tremendous service they do for the engineering community.

This year, the major issues we are following are:

- ✓ Protection of Qualification Based Selection for professional services from potential erosion via numerous procurement related bills.
- ✓ Funding for the State Building Code Council (which is currently not funded).
- ✓ Addressing the potential suspension of the National Flood Insurance Program in Hawaii by FEMA.
- ✓ Infrastructure funding proposals.
- ✓ Changes to the sick leave requirements that a business provides to its employees.

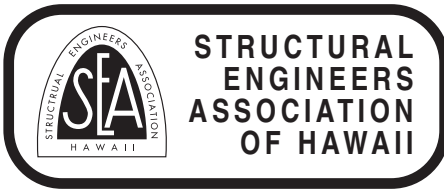
At the end of April, a delegation representing ACECH will also be going to ACEC's Annual Convention in Washington DC where we will be meeting with our local delegation of Representatives and Senators. Two things we will be discussing with them are:

- ✓ Support for a major infrastructure package this year that includes both incentives for public-private partnerships (P3s) and innovative financing, as well as additional direct federal spending to support core federal infrastructure programs, including the Highway Trust Fund and programs to support water projects;
- ✓ Comprehensive tax reform legislation that treats all business structures equally, and one that provides the funding and financing mechanisms to support the infrastructure package.

These issues significantly impact engineering firms and ACECH continues to protect our member's interest. If you're interested in participating in our legislative committee and learning all the things beyond "I'm Just a Bill", please let us know.

Corey Matsuoka, P.E., PMP, LEED AP
 ACECH President (FY 2016-2017)

**Deadline for
 Wiliki
 is May 15th**



PO BOX 3348, HONOLULU, HI 96801
Web Page URL <http://www.seaoh.org>

2017 BOD OFFICERS AND DIRECTORS

President	Jonathan Murai	791-3952
	jmurai@kaihawaii.com	
Vice President	Jeffrey Cudiamat	488-5000
	jcudiamat@structuralhawaii.com	
Secretary	Andrew Pang	535-3008
	andrewp@nagamineokawa.com	
Treasurer	Reid Nishimura	521-6958
	reid.nishimura@englekirk.com	
Director (Yr 2)	Damien Enright	845-2474
	structurs001@hawaii.rr.com	
Director (Yr 2)	Ryan Lawton	208-1433
	rlawton@histructures.com	
Director (Yr 1)	Michael Greer	591-2728
	mgreer@wje.com	
Director (Yr 1)	Deborah Kim-Ito	271-2862
	dkimito@pono-gms.com	
Past President	Jeffrey Hanyu	536-2108
	jeffreyhanyu@allisonide.com	

PREVIOUS BOD MEETING

April 7, 2017

Code Committee is tracking two bills in the Legislature that would fund the State Building Code Council so that the amendments to the 2012 International Building Code can be administered. SEAHO has submitted letters in support of the bills.

Scholarship for Young Member Group to NCSEA Summit

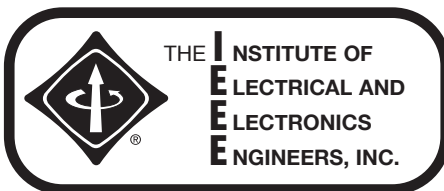
Applications for NCSEA scholarships for YMG members to attend the annual summit in Washington, D.C. during October 11-14, 2017 are available. Scholarships include summit registration and a \$500 travel stipend. Contact Jonathan Murai for more information.

General Membership Meetings/Technical Seminars/Events

For all events see seaoh.org or look for email flyer for registration.

- SEAHO Annual Convention – August 25 and 26, 2017, Aulani Resort & Spa, details to be announced.
- SEAHO Golf Tournament – October 20, 2017, Hoakalei Country Club, details to be announced.

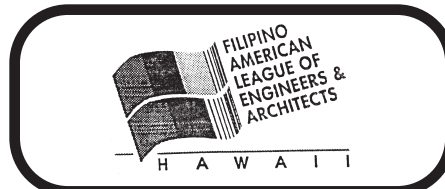
Next Meeting on May 3, 2017. For information, contact SEAHO President; Jonathan Murai jmurai@kaihawaii.com.



IEEE Hawaii Section

Hawaii Section Officers

Section Chair:	John Borland
Vice-Chair:	Al Toda
Treasurer:	Mark Rognstad
Secretary:	Grant Torigoe



P.O. Box 4135, Honolulu, Hawaii 96812
Website: <http://www.falea.org>

2017-18 Officers/BoDirectors

President:	Gene C. Albano, Jr., PE, LEED AP
VP/Pres-Elect:	Ferdinand B. Guinto, PE
Secretary:	Majella D. Stevenson, PE
Treasurer:	Riza Marie R. Gatdula, EIT
Auditor/	
Bus. Manager:	Nick A. Orense, PE
Press Rel. Off:	John C. Ramos, PE, CSP
Past President:	Francisco T. Cruzata, AIA
Directors:	Elvi M. Sutherland
	Angie L. Armas
	Maritez A. Marquez
	Belinda P. Tegui
	Joey G. Resurreccion

APRIL/MAY 2017 HIGHLIGHTS:

FALEA BOARD SCHOLARS DINNER –

April 8, 2017, @ Buzz's Original Steakhouse in Pearl City. Good feedback from attendees to this special event including FALEA President Gene Albano who sent the following message: "I just wanted to thank everyone for a very nice evening that included an incredible act of kindness by the Sapigao's in matching the scholarship given to Christina Agustin. Her courage to share her personal story was so very touching I am sure everyone was emotionally affected by her speech. As mentioned that night, the

2017 scholarship cohort is now on their task to develop the first "Kamiseta" which will be the first fundraising effort to increase the FALEA Foundation funding. I'll be personally mentoring the group on collaboration and if there is anyone who like to also be involved please let me know. I intend to always be involved with "Kamiseta" as FALEA continues."

NEXT FALEA BOARD MEETING – Notices, along with the Agenda should have been sent out by the time you read this.

HAVE A GREAT AND SAFE MONTH!!



<http://www.hawaiispe.org/>

HSPE Officers, 2016 to 2017

President:	Mike Silva, PE, LS, LEED AP
	mike@femaui.com
President Elect:	Mike Kamaka, PE
	mkamaka@bowersandkubota.com
Vice President:	Michael A. Lum
	mlum@bowersandkubota.com
Past President:	Curtis Beck, PE
	curt137inverse@yahoo.com
House of Delegates Rep:	Majella Stevenson, PE
	MujTravel@aol.com
Secretary:	Irina Constantinescu, PE, LEED AP
	IConstantinescu@brwnald.com
Treasurer:	Kurt Kunimune, PE
	kkunimune@bowersandkubota.com

TILECO INC.

We Help to Build Hawaii

ph. **682-5737**
www.tilecoinc.com

CONCRETE BLOCKS & BRICKS
CEMENT • MORTAR • SAND • REBAR • KEYSTONE RETAINING WALL PRODUCTS



CCMAA Hawaii Chapter

<http://hawchapter.cmaa.org>

2016 – 2017 CMAA Hawaii Board

PRESIDENT: Chandra Namumnart, CCM, CISEC (EKNA Services, Inc.)

VICE-PRESIDENT: Jeff Mack, P.E. (CH2M)

SECRETARY: Julie Hero, P.E., CCM (SSFM International)

TREASURER: Alex Pascual, P.E. (Bow Construction Management Service, Inc.)

PAST PRESIDENT: Bill Thornton, CCM (Ledcor)

DIRECTOR: Derek Mukai, P.E., CCM (Community Planning and Engineering, Inc.)

DIRECTOR: Tim Bransen, CCM (Bowers + Kubota Consulting)

DIRECTOR: Mike Young, P.E., CCM (Bowers + Kubota Consulting)

DIRECTOR: Jeff Clark (Flour)

CMAA Hawaii Chapter News:

CMAA Hawaii has a lot going on in April and May! In April, we held our 2nd Happy Hour/networking event at Mai Tai's Ala Moana which was well attended and (as always) lots of fun. We followed this up with our 2nd community service event of our 2017 year on April 22nd, working to assist the YWCA in Kaneohe on a beautification project that will benefit our Windward side Ohana. Thanks to Frank Parker for his efforts to facilitate this event and to all of our members who participated in the event. If you would like to join this committee and help organize these worthwhile activities, please contact our community Service Chair Frank

Please join us for **CMAA Hawaii Chapter's 6th Annual Mini-Conference** on May 18, 2017, at the majestic Ko'olau Ballrooms on windward Oahu. From 8:00 am to 3:00 pm, we will have presentations from various professionals in the Engineering and Construction industry, with a Happy Hour Reception to follow.

PROGRAM:

8:00 a.m. – Registration / Exhibits Open

9:00 a.m. – Morning Sessions

11:30 a.m. – Luncheon Buffet

1:00 p.m. – Afternoon Sessions

2:45 p.m. – Program Ends

3:00 p.m. – Social Hour (pau hana, pupus will be provided)

SPEAKERS:

Session 1: Paul Brussow, Rider Levett Bucknall

Session 2: Michael Carroll, Bays Lung Rose & Holma

Session 3: Norman Takeya, Honolulu Community College

Luncheon Speaker: Frank Hopkins, CH2M & Wai Yi Ng, C&C Honolulu

Session 4: Curtis Motoyama, ADA Specialist for HDOT

Session 5: Mary Sullivan, Lawson & Associates

Session 6: Jim Kelly, HECO

Price is \$100 for members, \$150 for non-members, and \$50 for students.

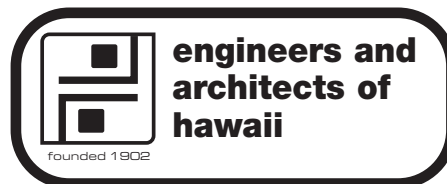
Online Registration-

<https://docs.google.com/forms/d/e/1FAIpQLSevudSzZ58vkFhW8HVYIMhFmfHwlt4yRxCZdAtY7MvCZGiA/viewform>

Parker at Frank.Parker@ch2m.com.

We will be opening the enrollment period for the **2017 Professional Construction Management (PCM) class** next month- Last year this class sold out- so if you would like a seat- please don't procrastinate!

We are also accepting applications for the **CMAA Hawaii 2017 Scholarships**; CMAA Hawaii will award 2 scholarships for \$1000 each to full time undergraduate students currently enrolled at Honolulu Community College or University of Hawaii and interested in or pur-



PO. Box 1901, Honolulu, HI 96805-1901

An association for Hawaii's Engineers and Architects

WEB address: www.eahawaii.org

EAH 2016- 2017 Officers

President	Sam Gillie, PE	542-4739
1st VP	Dave Martin PE	543-4504
2nd VP	Open	
Treasurer	Aaron Erickson, PE	591-2728
Secretary	Gary Yamamoto, PE	485-2777
Stg-At-Arms	Martin McMorrow	256-4713
Director	Phil Blackman	
Director	Howard Wiig, PE	587-3811
Director	Bill Brizee, AIA	523-9636
Past Pres	Michael Albright	

EAH's new meeting location is Room 301 in the Topa Tower (Ewa tower on Fort Street; Old AMFAC Building). Validated parking is available (enter from Nimitz). The WEB site has been updated to provide directions and a Map. If you have questions please call Sam Gillie (543-4739).

Meetings are held every Friday (except Holidays). Meetings start at NOON and have ended PROMPTLY at 1:00 pm for 70 Years.

Program schedule may be adjusted. Call Sam Gillie to confirm speaker 543-4739; Fax 203-1335.

Lunch is \$10.00 Members, \$12.00 Guests. (All Welcome), Students Free. Drink refreshments are complimentary. You may bring your own lunches, in which case a \$2.00 donation is gratefully appreciated!!

suing a major/minor in Construction Management, or a dependent of an active CMAA Hawaii Chapter/Student Chapter member who has been accepted to attend a university or college and is interested in Construction Management with a cumulative GPA of 3.0 or higher. If you are interested in applying for one of these scholarships, please watch for our email blasts with more information and links to the application. Due date for submission is Friday June 30, 2017 at 4pm. Don't miss this opportunity!

We would love for you to be a part of the excitement that is CMAA Hawaii. Our chapter is here as a resource for **all** Construction Engineering and Management professionals, and the things that we do benefit not only our CM community but our larger Ohana as well.

If you have any questions regarding any of our upcoming events, would like to join our Ohana and become more involved with the CMAA Hawaii Chapter or would simply like to be added to our email list, please email us at hawaii.cmaa@gmail.com, or at our mailing address: CMAA Hawaii, PO Box 531, Honolulu, HI 96809.

Looking for a CCM? The current listing for all Hawaii CCMs can be found here: <https://cmaanet.org/certified-construction-managers-registry>.



SWE – Hawaiian Island Section
P.O. box 61728
Honolulu, HI 96839
Swe.hissection@gmail.com

Executive Committee:

President:	Chancy Hopper ArdentMC
Vice Pres.:	Valerie Mencias
Secretary:	Tiffany Au
Treasurer:	Anita Lenk
Section Rep.:	Rena Ting HECO
Alt Sec Rep.:	Pearl Yamaguchi

WILIKI ADVERTISERS NEEDED

5" x 2" – (10□)
\$64.00

7½" x 3½" – (25□)
(½ page) – \$160.00

2½" x 2½"
(6□)
\$40.00

7½" x 5" – (37½□)
½ page – \$240.00

4⅞" x 2½"
(11□)
\$72.00

2½" x 1¼"
\$20.00

The price for the ads will be based on a 1¼" x 2½" module size which is 1/24th of the page, and be \$20.00 per month with a 15% DISCOUNT for a 6-MONTH RUN.

Construction Manager, from page 1

ward progress of the project to continue, and backstopping and mentoring the onsite CM team.

Putting a price on the value of a good Construction Manager is not an easy task. You can't really compare what the project would have cost without one to what it actually cost using a CM because that value lies in the amount of money not spent during construction. You cannot quantify the improved quality of the completed project from what it might have otherwise been, or, over time, the value to the owner of being regarded as reasonable or proactive when advertising projects in a low bid environment.

In conclusion, "Why should I use a Construction Manager on my projects?" I would submit that the skill sets and strengths of Engineers, Architects, and Construction Managers are each very different, but complementary- each is crucial to the ultimate success of the project. The soft skills of knowing the field operations and being an effective communicator and problem solver are every bit as necessary as a solid set of contract documents to the success of the construction of the Owner's project/program.

Shout out for CMAA- CMAA is a National Organization (www.cmaanet.org) formed in 1982 as a way to establish a set of standards for managing capital construction projects. Our Hawaii Chapter was started in 2010 and has made a name for ourselves winning National Chapter of the Year 3 consecutive years since. One of the primary focuses of CMAA is the obtaining of the CCM certification- which requires (in addition to education and experience) having worked in a "Responsible in Charge" position making decisions on behalf of the owner for the project for a minimum of 4 years. Maintenance of the CCM certification also requires continuing education. Currently, there are over 3500 CCMs - a 54% increase over the past 5 years (we currently have 66 certified construction managers here in Hawaii - a 500% increase over the past 5 years!) If you are interested in finding a CCM in Hawaii, you can find a listing of them here- <http://cmamanet.org/certified-construction-managers-registry>.



Hawaii Section 2016-2017 OFFICERS

www.aacehawaii.com

President	David Ladines
Vice President	Maelyn Uyehara
Secretary	Kristy Kastner, PSP
Treasurer	Chris Kanae
Director of Social Media	Cristo Rojas



2015-2016 ITE Officers

President:	Sara Okuda sara.t.okuda@hawaii.gov
Vice Pres.:	Chad Kadokawa ckadokawa@wilsonokamoto.com
Secretary/ Treasurer:	Claire Fukuoka cfukuoka@atahawaii.com

APWA, from page 3

60th Annual Hawaii State Science and Engineering Fair

The 60th Annual State Science and Engineering Fair was held April 10-12 at the Convention Center. The fair is the culmination of countless hours of difficult work performed by students to conduct scientific research, prepare a display board to explain the research, and defend their research to individual scientists.

Hawaii Chapter is proud to partner with the Hawaii Academy of Science to recognize and bestow monetary awards to several of these aspiring scientists and engineers.

Scholarship Information

Hawaii Chapter is excited to again offer partial scholarships towards higher education tuition to eligible students who major in a public works-related field. Interested applicants may

Wiliki Advertisers Wanted

contact Victor Valdez at 356-1281 or vvaldez@ssfm.com.

Community Service

Last year, Hawaii Chapter participated in the City and County of Honolulu's Malama-o-Ka'a'ina program by painting out graffiti at the 16th Avenue Boulder Basin in Kaimuki. The Chapter intends to continue giving back to the local community with an upcoming service project. Information on future chapter events, such as community service projects, may be found at hawaii.apwa.net.



Recipients of APWA Hawaii Chapter awards with President Ryan Char.

Professional Directory

Tim Waite, P.E.
Sales, Engineer
Mobile: 808-479-1216
Email: twait@strongtie.com
Simpson Strong-Tie Co., Inc.



SSFM
INTERNATIONAL
www.ssfm.com

WPT
WALTER P. THOMPSON, INC.
SURVEYING & MAPPING
720 IWILEI ROAD
SUITE 425
P.O. Box 3351
HONOLULU, HI 96801
PHONE: (808) 536-2705
FAX: (808) 599-4032

R. M. TOWILL CORPORATION
SINCE 1930
Civil Engineering | Wastewater Engineering | Surveying & Mapping
Planning | Construction Management | Project Management
Contact: 808.842.1133 rmtowill@rmtowill.com www.rmtowill.com

**YOUR AD
COULD APPEAR
HERE FOR
\$235 A YEAR**

**JUNO
& ASSOCIATES**

CONSTRUCTION
COST CONSULTANTS
1210 Ward Avenue, Suite 204
Honolulu, Hawaii 96814
Phone: (808) 947-6855
info@juno-associates.com

WALKER INDUSTRIES, LTD.
Precast Concrete Products
CONSPAN
BRIDGE SYSTEMS
Frederick K. Wong, PE
P.O. Box 1568
Kahului, Maui, Hawaii 96732
Maui (808) 877-3430
Fax (808) 871-7262

**WILSON OKAMOTO
CORPORATION**
INNOVATORS • PLANNERS • ENGINEERS
www.wilsonokamoto.com

WJE
808.591.2728
www.wje.com
Engineers | Architects | Materials Scientists
Serving Hawaii and the Pacific Since 1979

**YOUR AD
COULD APPEAR
HERE FOR
\$235 A YEAR**

Aloha 'Āina, 'Ike Honua
Local Knowledge, Global Coverage
WSP
www.wspgroup.com
808.536.1757

**PARSONS
BRINCKERHOFF**

YKE
YOGI KWONG ENGINEERS, LLC
677 Ah Moana Blvd., Suite 710
Honolulu, HI 96813
Tel: (808) 942-0001
www.yogikwong.com
Geotechnical Engineering
Trenchless Engineering
Construction Management

HAWAII COUNCIL OF
ENGINEERING SOCIETIES
P.O. Box 2873
Honolulu, Hawaii 96802

RETURN SERVICE REQUESTED

Professional Directory

AECOM 1001 Bishop Street, Suite 1600 Honolulu, HI 96813 tel: 808.521.3051 www.aecom.com	ALLANA BUICK & BERS Building solutions. Engineering for life. Waterproofing & Roofing Building Envelope & Solar Solutions 808.538.0115 www.abbae.com	Austin Tsutsumi & Associates, Inc. Civil Traffic Environmental Surveying Branch Offices in Wailuku, Maui and Hilo, Hawaii www.atahawaii.com	 WWW.BELT COLLINS.COM
 BILLS ENGINEERING INC. Civil Environmental Engineering Tel: 808.792.2022 Fax: 808.792.2033 1124 Fort Street Mall Suite 200 Honolulu, HI 96813 info@BillsEngineering.com	 BOWERS + KUBOTA CONSULTING • Project Management • Planning • • Architectural/Engineering Design • Construction Management • 94-408 Akoko Street, Suite 201-A • Waipahu, Hawaii 96797 Phone: 808.836.7787 • Telefax: 808.834.4833	 Brown and Caldwell Environmental Engineers & Consultants Maui - Honolulu brownandcaldwell.com	 COFFMAN ENGINEERS LASTING creativity results relationships Multidiscipline Engineers www.coffman.com 851 Fort Street Suite 300 Honolulu, HI 96813 808.687.8884
 ControlPoint Surveying, Inc. Oahu: 615 Pilikoi Street, Suite 700 Honolulu, Hawaii 96814 Ph: (808) 591-2022, Fax: (808) 591-8333 Email: surveying@cpshawaii.net Maui: 1129 Lower Main Street, Suite 102 Wailuku, Hawaii 96793 Ph: (808) 242-9641 Email: cpsmaui@cpshawaii.net	When it's RUST Call us (808) 676-1963 www.corrosioncops.com	Y. Ebisu & Associates Acoustical and Electronic Engineers 1126 12th Avenue, Room 305 Honolulu, Hawaii 96816 (808) 735-1634	 Engineering Concepts, Inc. Civil/Environmental/Sanitary Engineers 1150 South King Street, Suite 700 • Honolulu, Hawaii 96814 Phone: (808) 591-8820 • Fax (808) 591-9010 Email: eci@echawaii.com
 ESH ENGINEERS SURVEYORS HAWAII, INC. (FORMERLY WILLIAM HEE & ASSOCIATES, INC.) 1320 N SCHOOL ST., STE 1 HONOLULU, HAWAII 96817 Phone: 591-8116	FUKUNAGA & ASSOCIATES, INC. 1357 Kapiolani Blvd., Suite 1530 Honolulu, HI 96814 Ph: 944-1821 • Fax: 946-9339 office@fukunagaengineers.com www.fukunagaengineers.com	MASA FUJIOKA & ASSOC. A PROFESSIONAL PARTNERSHIP ENVIRONMENTAL • GEOTECHNICAL • HYDROGEOLOGICAL CONSULTANTS 98-021 Kamehameha Highway, Suite 337 Aiea, Hawaii 96701-4913 Phone 808 484-5366 • Fax 808 484-0007 masa-fujioka-associates.com • mfujioka@masafujioka.com	 GEOLABS, INC. Geotechnical Engineering and Drilling Services 2006 Kalihi Street Honolulu, Hawaii 96819 Phone: 841-5064 Fax: 847-1749
Gray · Hong · Nojima & Associates, Inc. CONSULTING ENGINEERS 201 Merchant Street, Suite 1900 Honolulu, Hawaii 96813 Telephone: (808) 521-0306 Fax: (808) 531-8018 email@grayhongnojima.com www.grayhongnojima.com	 HART CROWSER Geotechnical, Environmental, and Natural Resource Consulting jenica.masters@hartcrowser.com www.hartcrowser.com	total POWER SOLUTION HAWTHORNE POWER SYSTEMS 94-025 Farrington Hwy. Waipahu, Hawaii 96797 808/676-0205	 HCD ROCK SOLID SINCE 1938 www.hcdhawaii.com • sales@hcdhawaii.com
 Honolulu 808.697.6200 Maui 808.359.2518 hdrinc.com	HIDA, OKAMOTO & ASSOCIATES, INC. CONSULTING CIVIL ENGINEERS PACIFIC GUARDIAN TOWER 1440 Kapiolani Boulevard, Suite 1120 Honolulu, Hawaii 96814 Phone: (808) 942-0066 Fax: (808) 947-7546	 Hirata & Associates, Inc. Geotechnical Engineering 808.486.0787 www.hirata-hawaii.com	 SAM O. HIROTA, INC. Engineers & Surveyors 864 S. Beretania Street Honolulu, Hawaii 96813 Telephone: 537-9971
ISLAND GEOTECHNICAL ENGINEERING, INC. Geotechnical Consultants 330 Ohukai Road, Suite 119 Kihei, Hawaii 96753 Phone: (808) 875-7355 Fax: (808) 875-7122 Email: ige@igehawaii.com	Kennedy/Jenks Consultants Engineers & Scientists The BLOCK Honolulu 707 Richards Street Suite 528 Honolulu Hawaii 96813 P: 808.218.6030 F: 808.488.3776 Direct: 808.218.6042	 THE LIMTIACO CONSULTING GROUP CIVIL ENGINEERING AND ENVIRONMENTAL CONSULTANTS 1622 Kanakani Street • Honolulu, Hawaii 96817 (808) 596-7790 • tlgohawaii.com	MCE INTERNATIONAL, INC. MECHANICAL AND FIRE PROTECTION ENGINEERS 1360 S. Beretania St., Ste. 400 Honolulu, Hawaii 96814 Ph: (808) 941-0955 Fax: (808) 550-8167 Email: mcehnl@mceinternational.com
Creative People, Practical Solutions,® moffatt & nichol Marine & Transportation Planners and Engineers 808.533.7000 www.moffattnichol.com	NAGAMINE OKAWA ENGINEERS INC. CONSULTING STRUCTURAL ENGINEERS 1003 Bishop Street • Suite 2025 Honolulu, Hawaii 96813 Phone: (808) 536-2626 • FAX: (808) 536-3926	 Okahara and Associates, Inc. ENGINEERING CONSULTANTS Civil - Mechanical Engineers Hilo: (808) 961-5527 • hilo@okahara.com Oahu: (808) 524-1224 • oahu@okahara.com www.okahara.com Small Business and Certified HUBZone	 oceanit www.oceanit.com
 Pacific Geotechnical Engineers, Inc. Soils & Foundation Engineering Consultants 94-417 Akoko Street Waipahu, Hawaii 96797 (808) 678-8024 FAX (808) 678-8722 E-mail: pge@pacificgeotechnical.com	 ParEn, Inc. dba park engineering Engineers, Surveyors, Planners SUITE 1500, PACIFIC PARK PLAZA 711 KAPIOLANI BOULEVARD HONOLULU, HAWAII 96813 TELEPHONE: (808) 593-1676 FAX: (808) 593-1607 EMAIL: paren@pareninc.com	 Sato & Associates, Inc. Consulting Engineers Honolulu • Maui www.satoandassociates.com	SHIMABUKURO, ENDO & YOSHIZAKI, INC. Civil, Environmental & Structural Engineers 1126 12th Avenue, #309 Honolulu, Hawaii 96816-3715 Phone: (808) 737-1875 Fax: (808) 734-5516 Email: seyeng@seyeng.com